

EnviCheck Water footprint optimisation



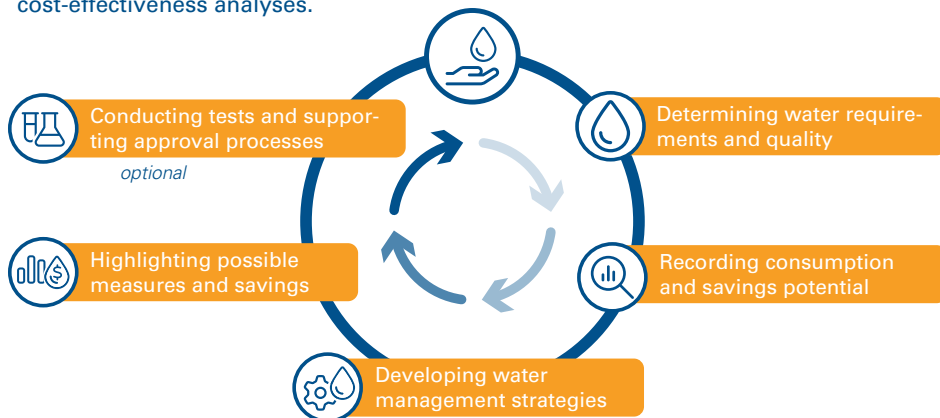
We show you how you can reduce your water consumption and reuse water.



END-TO-END SERVICE

By optimising your consumption of fresh water and reducing the amount of wastewater generated, you can cut operating costs and improve your supply reliability.

We will support you in drawing up strategies for reducing your water footprint, analyse your water flows, develop solutions for water treatment and conduct cost-effectiveness analyses.



We are the right partner for you:

- Your solutions provider for end-to-end water management
- Consultation, plant engineering, service, digitalisation, plant management and water treatment products – all from a single source
- More than 5,000 plants successfully deployed
- In-house laboratories for biological, chemical and physical analyses
- Testing and piloting capacities with over 25 lab-scale processes and more than 25 pilot plants
- A pioneer in the area of water reuse

Discover how to use water more efficiently and reap the environmental and economic benefits. Together we can create a sustainable future. Get in touch!



EnviroChemie GmbH
In den Leppsteinswiesen 9
64380 Rossdorf / Germany

engineering@envirochemie.com
+49 6154 6998 0
www.envirochemie.com

Find out more:



[envirochemie.com/envicheck](https://www.envirochemie.com/envicheck)