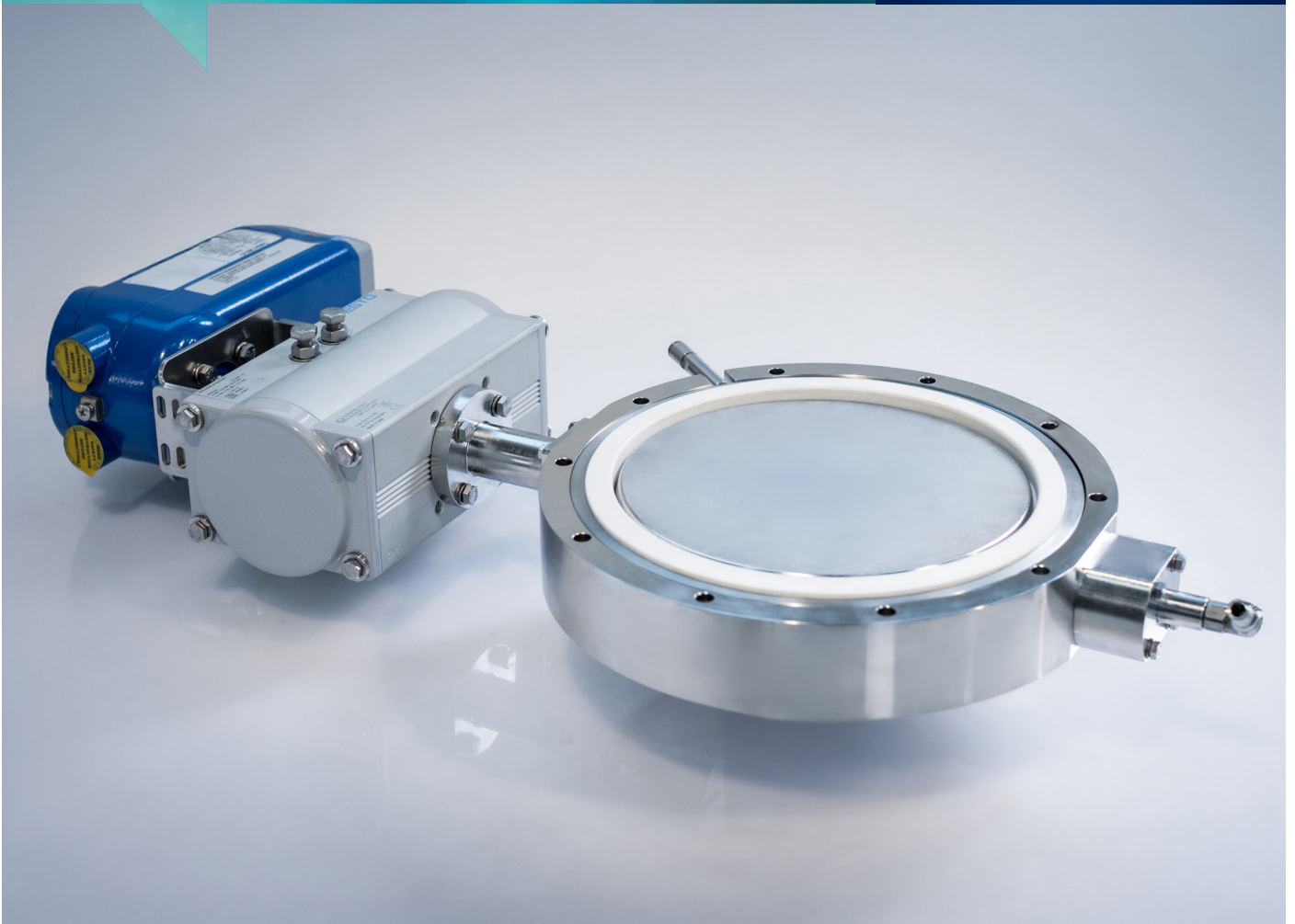


DEC Aseptic Butterfly Valve



Designed specifically for aseptic operations, this valve integrates inflatable sealing technology avoiding product shredding and allows for accurate dosing.

- Available in sizes ranging from DN 50 to DN 300, full-bore passage up to DN 80
- No flow restriction
- Engineered for optimal performance, rapid powder conveying with exceptional fine dosing accuracy
- Designed to minimize dead zones, preventing contamination
- CIP (Clean-In-Place) and SIP (Sterilization-In-Place) capabilities
- Quick inflatable seal replacement mechanism allowing for reduced maintenance downtime
- ATEX certified
- Available in combination with PTS Powder Transfer System®

DEC Aseptic Butterfly Valve



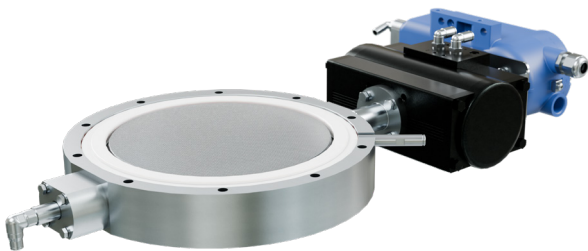
Construction

- Butterfly valve with eccentric disc
- Wafer installation between flanges compliant with DIN EN 1092-1 and ANSI B16.5 150lbs
- Triclamp connection for different norms DIN 32676-A/B/C (DIN, ISO, ANSI)
- Single and double acting actuator depending on the valve version
- Antistatic devices to transfer possible electric charges to the main ground line
- Compact design facilitating easy maintenance and gasket replacement

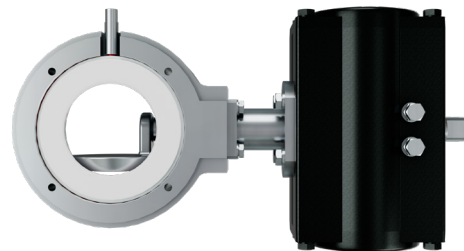
- Optional control units, open and close sensors, electropneumatic positioners (depending on valve type)

Materials

- Gaskets: Silicone white FDA or EPDM
- Contact parts: AISI 316L – 1.4404, Duplex - 1.4462 or Hastelloy C-22 – 2.4602
- O-rings: FEP/VMQ, other materials dedicated for process and compatibility
- Actuator: Aluminum alloy or inox
- Non-contact parts: AISI 316L – 1.4404, AISI 304 – 1.4301



Aseptic Butterfly Valve: Coarse and fine dosing options



Full-bore passage up to DIN 80

Technical Data	Value
Range of Nominal Widths	DN 50 - DN 300
Dosing Accuracy	10 g - 50 g depending on valve size and product
Operating Temperature	- 20°C to +100°C
Sterilization	Saturated steam at max 2 barg, 134°C, 30 min
Operating Pressure	-1 barg to +3 barg or -1 barg to +6 barg
Inflatable Gasket Pressure	Operating pressure plus 2 barg
Pneumatic Actuator Pressure	6 bars