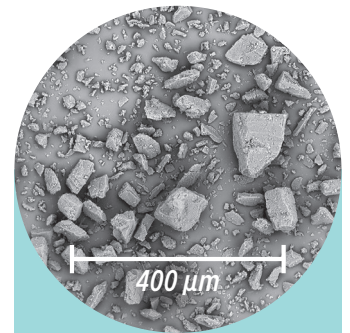


# New from MEGGLE: InhaLac® 145 – new milled grade filling the gap between InhaLac® 140 and InhaLac® 150



**InhaLac® 145** is a new product within the family of milled inhalative lactose. It consists of irregularly shaped particles with a strictly controlled and specific particle size. **InhaLac® 145** has the typical rough surface, cohesiveness and flowability of milled lactoses.

**InhaLac® 145** is a middle sized carrier lactose with mean particle size of 35 µm and approximately 11% of particles below 5 µm.



## InhaLac® 145

### Particle size distribution

X <sub>10</sub>	1 – 6 µm
X <sub>50</sub>	20 – 50 µm
X <sub>90</sub>	65 – 140 µm

## Benefits

- A broad spectrum of particle size distributions
- High storage stability
- Highly controlled and homogenous powder characteristics
- Highest microbial quality including low endotoxins

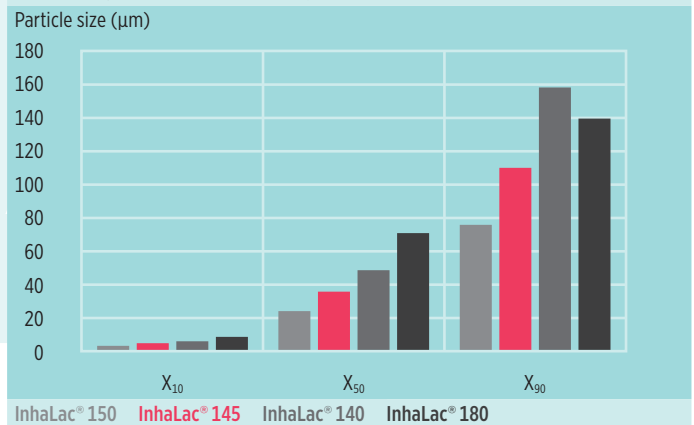
## Application

Milled lactose suitable for use in pulmonary and nasal drug delivery.

**The expansion of MEGGLE's InhaLac® product family allows the formulator to choose the optimal DPI lactose grade for each application and fine-tune each formulation for superior performance. InhaLac® 145 complements MEGGLE's milled DPI grade portfolio.**

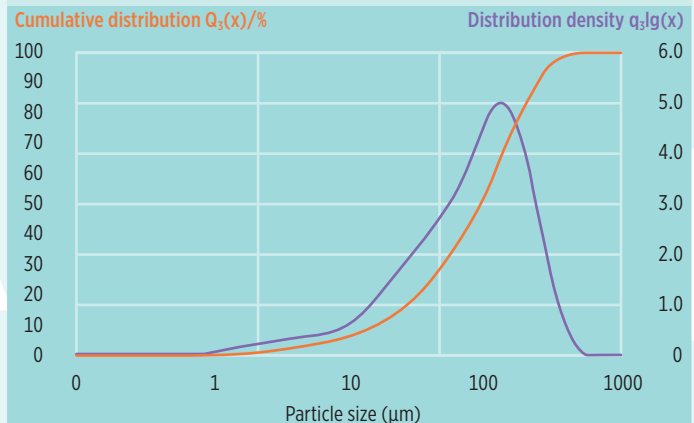
### Comparison of typical particle size distribution (Laser diffraction)

InhaLac® dry powder inhaler lactose grades, milled



### Typical particle size distribution (Laser diffraction)

InhaLac® 145 – milled dry powder inhaler lactose grade



*Typical cumulative PSD and distribution density of MEGGLE's milled inhalation lactose grade InhaLac® 145. Analyzed by Malvern Mastersizer 3000 laser diffraction system.*

**MEGGLE GmbH & Co. KG**  
Business Unit Excipients  
Meggelerstrasse 6-12  
83512 Wasserburg  
Germany  
Phone +49 8071 730  
info.excipients@meggle.com  
www.meggle-excipients.com