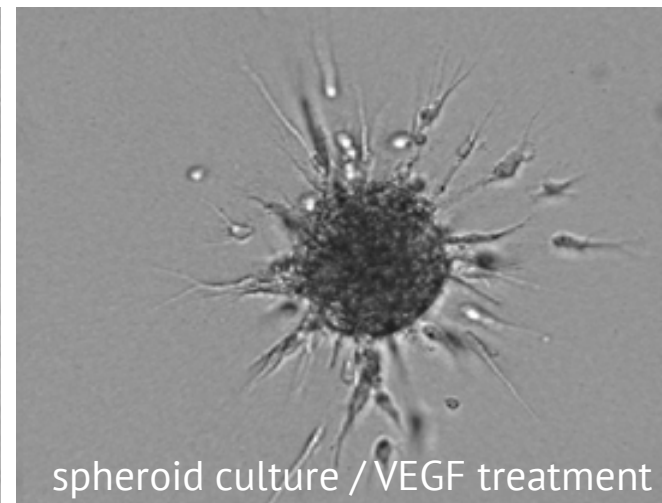
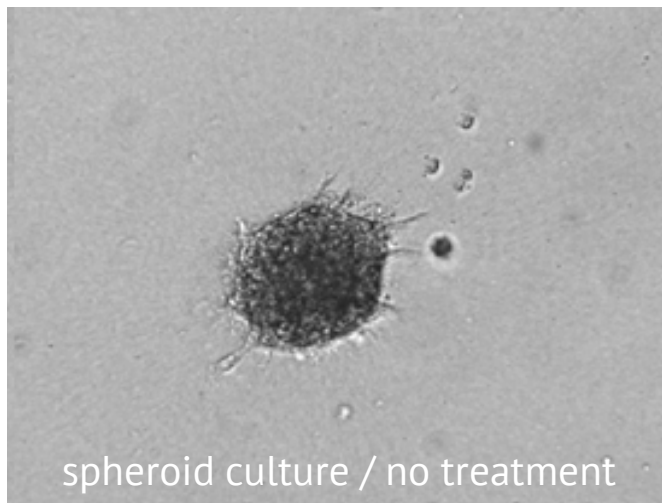
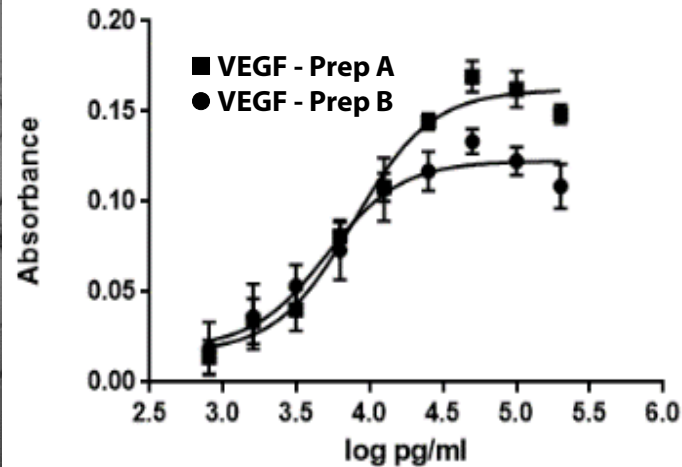
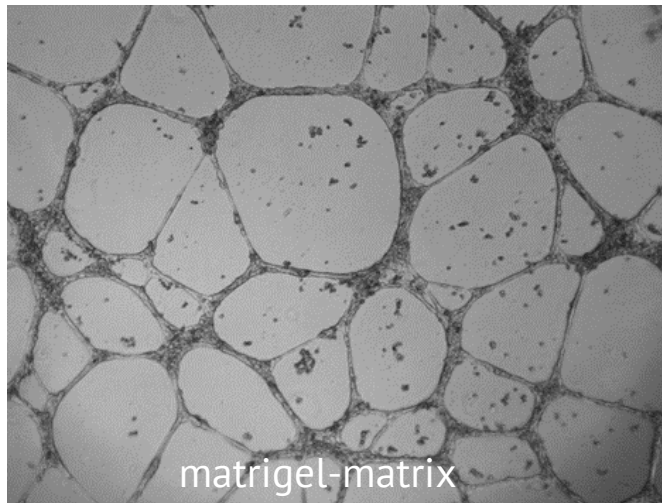


# HUVEC/TERT2 neo-angiogenic potential



When inoculated onto matrigel-matrix HUVEC/TERT2 cells form typical capillary like structures demonstrating their angiogenic potential, which is also mirrored by the formation sprouts when grown as 3D spheroids. Additionally, the cells respond to VEGF treatment in a concentration dependent manner.