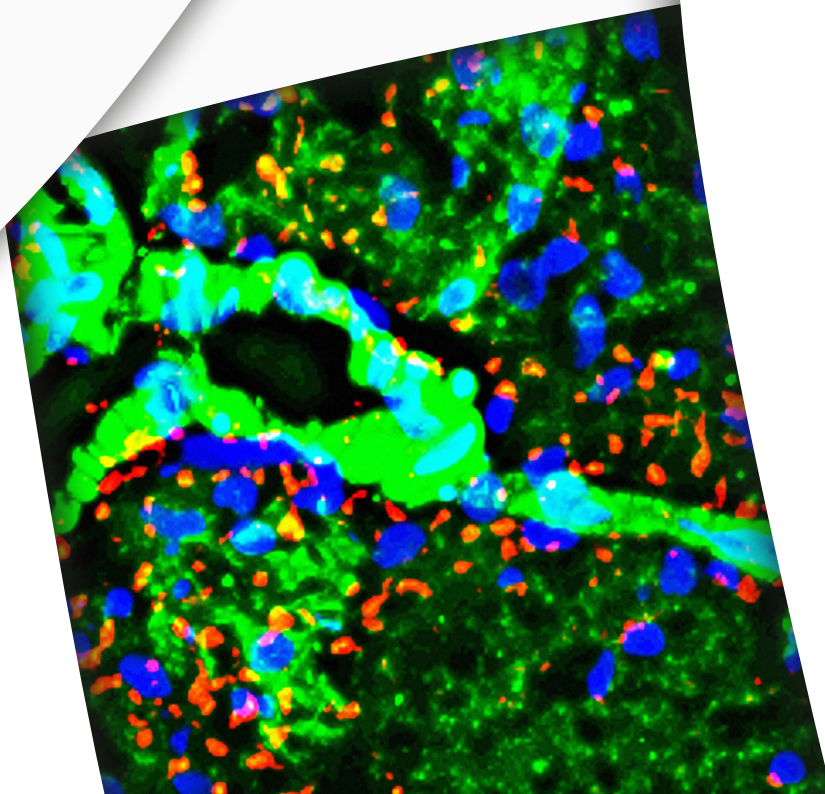


TAU PEPTIDES BACHEM

PIONEERING PARTNER FOR PEPTIDES



TAU PEPTIDES OFFERED BY BACHEM

Alzheimer's disease is a neurodegenerative disease characterized by extracellular amyloid- β (A β) plaques and intracellular neurofibrillary tangles containing pathological tau protein aggregates. Even though both, A β and tau, are related to Alzheimer's disease, studies have shown that the degree of tau-related pathology correlates better with the degree of dementia than the amyloid plaque burden. Human tau, which exists in six isoforms of different length, is used in cerebrospinal fluid as a sensitive and specific biomarker for Alzheimer's disease, usually determined by ELISA.

In addition to our catalog portfolio of over 250 Alzheimer's disease related research products, Bachem now offers a comprehensive choice of tau peptides including phosphorylated sequences as new catalog products.

Tau Protein

Microtubules are part of the cytoskeleton, tubulin polymers with various cellular tasks. For instance, they play a role in stabilizing cell shape and during mitosis, and act as tracks for intracellular transport by motor proteins. Microtubules are stabilized by various types of microtubule-associated proteins which bind to their surface and promote their self-assembly from tubulin

subunits. Tau (Microtubule-Associated Protein Tau, MAPT) [1] stabilizes the microtubules of the neuronal cytoskeleton and thus is important for their regular function. Tau protein is primarily expressed in neuronal cell bodies and axons.

The binding affinity of tau for microtubules is regulated by the phosphorylation state of the protein. In healthy neurons, the protein is phosphorylated by a number of kinases and dephosphorylated by phosphatases [2,3]. An equilibrium of phosphorylated and non-phosphorylated forms serving as tau pool exists in the cytosol. Phosphorylation is reverted when tau binds to tubulin. Glycogen-synthase kinase-3 β (GSK-3 β), cyclin-dependent protein kinase 5 (cdk5), and cAMP-dependent protein kinase (PKA) are amongst the most important tau kinases [4]. Protein phosphatase PP2A was found to be the major tau phosphatase ([3,5]. In Alzheimer's disease (AD) or other pathological conditions known as tauopathies, phosphorylation of the protein is dysregu-

TAU PROTEIN

Tau protein is primarily expressed in neuronal cell bodies and axons and, depending on its six isoforms, has a length of 352 to 441 amino acids.

lated leading to a decrease of the tubulin-binding capacity. Whereas the microtubules are destabilized, hyperphosphorylated tau protein aggregates yielding the so-called neurofibrillary tangles (NFTs), one of the hallmarks of AD [6-9]. In NFTs, the extent of

tau phosphorylation was found to be 3 to 4 times higher than in cytosolic tau of healthy and AD brains [10].

Tau is a rather disordered highly flexible protein. Due to its random coil conformation

Table 1: Isoforms of human Tau protein (N insert, R repeat).

Clone*	Inserts/Repeats	Number of AA	MW (kDa)	Sequence
htau23 (fetal tau)	0N/3R	352	36.7	MAEPRQEFVEMDHAGTYGLGDRKDQGGYTMHQDQEGDTDAGLKAEAEAGIGDTPSLEDEAAGHVTQARMVSKSKDGTGSDDKKAKGADGKTKIATPRGAAPPQGKGQANATRIAPAKTPPAPKTPSSGEPKSGDRSGYSSPGSPGTPGSRSRTPSLPTPTREPKKVAVVRTPPKSPSSAKSRLQTAPVMPDLKNVKSKIGSTENLKHQPGGGKVQIVYKPVDSLKVTSKCGSLGNIHHKPGGGQVEVKSEKLDKDRVQSKIGSLDNITHVPGGGNKKIETHKLTFRENAKAKTDHGAEIVYKSPVVGDTSPRHLSNVSTGSIDMVDSPQLATLADEVASASLAKQGL
htau37	1N/3R	381	39.7	MAEPRQEFVEMDHAGTYGLGDRKDQGGYTMHQDQEGDTDAGLKEsplQPTPTEDGSEEPGSETSDAKSTPTAEAEAEAGIGDTPSLEDEAAGHVTQARMVSKSKDGTGSDDKKAKGADGKTKIATPRGAAPPQGKGQANATRIAPAKTPPAPKTPSSGEPKSGDRSGYSSPGSPGTPGSRSRTPSLPTPTREPKKVAVVRTPPKSPSSAKSRLQTAPVMPDLKNVKSKIGSTENLKHQPGGGKVQIVYKPVDSLKVTSKCGSLGNIHHKPGGGQVEVKSEKLDKDRVQSKIGSLDNITHVPGGGNKKIETHKLTFRENAKAKTDHGAEIVYKSPVVGDTSPRHLSNVSTGSIDMVDSPQLATLADEVASASLAKQGL
htau39	2N/3R	410	42.6	MAEPRQEFVEMDHAGTYGLGDRKDQGGYTMHQDQEGDTDAGLKEsplQPTPTEDGSEEPGSETSDAKSTPTAEDVTAPLVDEGAPGKQAAAPHTPEIPEGTTAEAEAGIGDTPSLEDEAAGHVTQARMVSKSKDGTGSDDKKAKGADGKTKIATPRGAAPPQGKGQANATRIAPAKTPPAPKTPSSGEPKSGDRSGYSSPGSPGTPGSRSRTPSLPTPTREPKKVAVVRTPPKSPSSAKSRLQTAPVMPDLKNVKSKIGSTENLKHQPGGGKVQIVYKPVDSLKVTSKCGSLGNIHHKPGGGQVEVKSEKLDKDRVQSKIGSLDNITHVPGGGNKKIETHKLTFRENAKAKTDHGAEIVYKSPVVGDTSPRHLSNVSTGSIDMVDSPQLATLADEVASASLAKQGL
htau24	0N/4R	383	40.0	MAEPRQEFVEMDHAGTYGLGDRKDQGGYTMHQDQEGDTDAGLKAEAEAGIGDTPSLEDEAAGHVTQARMVSKSKDGTGSDDKKAKGADGKTKIATPRGAAPPQGKGQANATRIAPAKTPPAPKTPSSGEPKSGDRSGYSSPGSPGTPGSRSRTPSLPTPTREPKKVAVVRTPPKSPSSAKSRLQTAPVMPDLKNVKSKIGSTENLKHQPGGGKVQIINKKLDLSNVQSKCGSKDNIKHVPGGGSVQIVYKPVDSLKVTSKCGSLGNIHHKPGGGQVEVKSEKLDKDRVQSKIGSLDNITHVPGGGNKKIETHKLTFRENAKAKTDHGAEIVYKSPVVGDTSPRHLSNVSTGSIDMVDSPQLATLADEVASASLAKQGL
htau34	1N/4R	412	43.0	MAEPRQEFVEMDHAGTYGLGDRKDQGGYTMHQDQEGDTDAGLKEsplQPTPTEDGSEEPGSETSDAKSTPTAEAEAEAGIGDTPSLEDEAAGHVTQARMVSKSKDGTGSDDKKAKGADGKTKIATPRGAAPPQGKGQANATRIAPAKTPPAPKTPSSGEPKSGDRSGYSSPGSPGTPGSRSRTPSLPTPTREPKKVAVVRTPPKSPSSAKSRLQTAPVMPDLKNVKSKIGSTENLKHQPGGGKVQIINKKLDLSNVQSKCGSKDNIKHVPGGGSVQIVYKPVDSLKVTSKCGSLGNIHHKPGGGQVEVKSEKLDKDRVQSKIGSLDNITHVPGGGNKKIETHKLTFRENAKAKTDHGAEIVYKSPVVGDTSPRHLSNVSTGSIDMVDSPQLATLADEVASASLAKQGL
htau40	2N/4R	441	45.9	MAEPRQEFVEMDHAGTYGLGDRKDQGGYTMHQDQEGDTDAGLKEsplQPTPTEDGSEEPGSETSDAKSTPTAEDVTAPLVDEGAPGKQAAAPHTPEIPEGTTAEAEAGIGDTPSLEDEAAGHVTQARMVSKSKDGTGSDDKKAKGADGKTKIATPRGAAPPQGKGQANATRIAPAKTPPAPKTPSSGEPKSGDRSGYSSPGSPGTPGSRSRTPSLPTPTREPKKVAVVRTPPKSPSSAKSRLQTAPVMPDLKNVKSKIGSTENLKHQPGGGKVQIINKKLDLSNVQSKCGSKDNIKHVPGGGSVQIVYKPVDSLKVTSKCGSLGNIHHKPGGGQVEVKSEKLDKDRVQSKIGSLDNITHVPGGGNKKIETHKLTFRENAKAKTDHGAEIVYKSPVVGDTSPRHLSNVSTGSIDMVDSPQLATLADEVASASLAKQGL

* designations taken from [9]

Insert 1: ESPLQPTPTEDGSEEPGSETSDAKSTPTAE
Insert 2: DVTAPLVDEGAPGKQAAAPHTPEIPEGTT

Repeat 1: QTAPVMPDLKNVKSKIGSTENLKHQPGGGK
Repeat 2: VQIINKKLDLSNVQSKCGSKDNIKHVPGGGG
Repeat 3: VQIVYKPVDSLKVTSKCGSLGNIHHKPGGGQ
Repeat 4: VEKSEKLDKDRVQSKIGSLDNITHVPGGGN

AD ALZHEIMER'S DISEASE – CHANGES IN TAU

crystals of the protein could not be obtained [11]. The loose, unfolded structure prevented the determination of the exact binding site of tau to microtubules. Tau is rather stable to treatment with acids or heating [12]. Tau consists of four domains characterized by their amino acid composition and function: the N-terminal “projection domain”, a proline-rich region, the microtubule-binding part, and the C-terminal sequence [9]. The protein is a dipolar molecule, its N-terminal region contains a large proportion of acidic amino acid residues (pI 3.8), whereas the proline-rich middle part and the C-terminus are dominated by basic amino acids (pI 11.4 and 10.8, respectively) [8]. The distribution of charges can be changed by post-translational modifications associated with pathological conditions [13]. Tau exists in six major isoforms differing in number of tubulin-binding domains and length, they vary in size from 352 to 441 amino acid residues (see Table 1). They also differ in biological activity. The short isoforms allow plasticity of the cytoskeleton whereas the longer ones may preferentially play a role in its stabilization [14]. In adult human brains, the six isoforms can be found whereas in fetal brains, only the shortest isoform is expressed [15]. A central domain of tau, residues 198 to 369 for the longest isoform, aggregates with tubulin and promotes formation of microtubules. It is characterized by 3 to 4 repeat domains, all involved in binding [16] (Fig. 1). The N-terminal part is called projection domain as it projects from the surface of the microtubule. It varies in length, as 1 or 2 short sequences can be inserted. The projection domain interacts with other cytoskeletal elements and the neuronal plasma membrane, and is involved in signal transduction [17].

Tau Pathology

The mechanism of tau aggregation is not completely understood. Association with microtubules preserves the disordered structure of the protein. Aberrant post-translational modifications and conformational changes of tau go together with loss of affinity for tubulin and risk of aggregate formation. Phosphorylation of two or three Ser/Thr residues is required for the optimal function of tau, for pertaining its unfolded structure in free form, whereas hyperphosphorylation (> 6 phosphoserines/threonines [7]) inactivates the protein. A part of the hyperphosphorylated protein aggregates yielding NFTs or tau fibers (paired helical filaments, PHFs), the rest (about 40%) remains dissolved in the cytosol disrupting microtubules [10,18]. The longest tau isoform consisting of 441 amino acids contains about 80 Ser and Thr residues, all potential phosphorylation sites. Up to now, more than 40 sites have been identified in tau isolated from AD brains. The equilibrium between phosphorylation and dephosphorylation is regulated by various enzymes, so hyperphosphorylation may also result from the inability to revert this modification of tau by action of a phosphatase. Quantitative in vitro studies demonstrated that phosphorylation of tau at Ser²⁶², Thr²³¹, and Ser²³⁵ inhibited microtubule binding by ~35%, ~25%, and ~10%, respectively [19]. Evaluation of the binding kinetics between hyperphosphorylated and normal tau suggested that Ser¹⁹⁹/Ser²⁰²/Thr²⁰⁵, Thr²¹², Thr²³¹/Ser²³⁵, Ser²⁶²/Ser³⁵⁶, and Ser⁴²² could be critical phosphorylation sites that turn tau into an inhibitory molecule that destabilizes microtubules by removing tubulin-associated protein [20,21]. Further phosphorylation at Thr²³¹, Ser³⁹⁶, and Ser⁴²² promoted self-aggregation of tau into filaments.

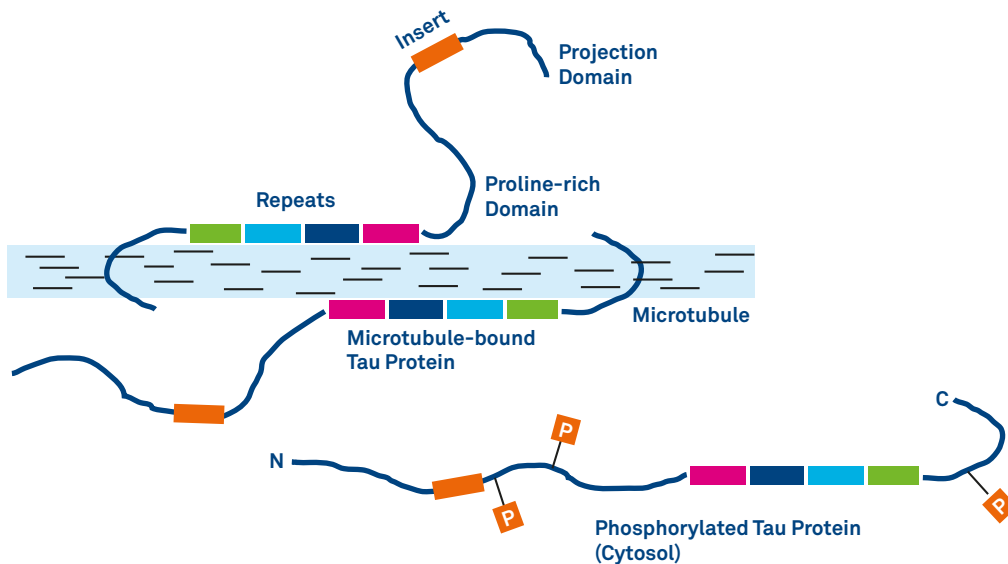


Fig. 1: Structure and normal function of tau. The protein contains 2-3 phosphoserine/threonine residues.

N^ε Acetylation of lysines may also be involved in the regulation of tau as well as in pathological processes [22]. This modification mediated by histone acetyltransferases (HAT) eliminates positive charges. Aberrant acetylation could interfere with the binding of tau to microtubules [23]. Acetylation of three lysine residues essential for tau binding has been detected. Acetylation of one of them, Lys²⁸⁰, could play a role in tangle formation [23,24]. Hyperphosphorylation promotes N^ε acetylation. The side chain modification can be reverted by the NAD-dependent histone deacetylase SIRT1 [25], so an equilibrium of acetylation/deacetylation could be maintained. Activity of SIRT1 is reduced in AD brains [26].

Enzymatic degradation is a major modification of tau protein in AD. Caspase-3-mediated cleavage at Asp⁴²¹ [27] and further C-terminal truncation promotes maturation of NFTs [28]. The truncated proteins could serve as biomarkers for AD. N-terminal truncation at Asp¹³ is catalyzed by caspase-6, its role being less clear. Regular tau clearance via ubiquitinylation and degradation effected by the 26S proteasome or by autophagy is impeded in AD brains [29,30]. Glycation [31], deamidation [32], oxidation, and nitration [33,34] of tau are further modifications of the protein associated with tauopathies, whereas O-glycosylation of serine/threonine with N-acetylglucosamine

reduces aberrant phosphorylation [35,36]. This beneficial modification of tau relies on an intact glucose metabolism in the brain, a condition not always met in case of AD. Accordingly, diabetes has been established as a risk factor for the disease [37].

Conformation strongly affects the enzymatic (de)phosphorylation of serines and threonines in the vicinity of a proline residue. The peptidyl-prolyl cis/trans isomerase Pin 1 isomerizes phosphoserine/threonine-proline motifs. A trans-cis conversion of the pThr²³¹-Pro²³² bond has been observed during early stages of AD. Pin1 prevents the accumulation of the resulting pathogenic cis form of tau by reverting the isomerization allowing dephosphorylation by PP2A [38]. Trans-tau promotes microtubule assembly. In AD brains, activities of both Pin 1 and PP2A are decreased [39]. An antibody developed against cis (pThr²³¹)-tau was shown to block brain injury and tauopathy [40,41].

VQIINK (tau 275-280) and VQIVYK (tau 306-311, PHF6), two hexapeptide motifs from the N-termini of repeats R2 and R3 with a marked tendency for β -sheet formation are involved in the aggregation of hyperphosphorylated tau yielding neurotoxic polymers [24,42]. PHF formation can be abolished by incorporating proline in one of the segments [43]. The chaperone Hsp90 binds to

Even though both A β and tau are related to Alzheimer's disease, studies have shown that the degree of tau-related pathology correlates better with the degree of dementia than the amyloid plaque burden.

the VQIVYK motif [44] and, together with cochaperones, assists in tau clearance via autophagy or proteasome-mediated degradation [45]. Do et al. could demonstrate that the fragments A β (25-35), GSNKGAIIGLM, and tau (273-284), GKVVQIINKKLDL, could interact affecting the self-assembly process of both A β and tau [46].

Tau and Alzheimer's Disease

Aggregation of β -amyloid peptides (which result from processing of amyloid precursor protein) into senile plaques as well as formation of neurofibrillary tangles (NFT) from tau protein are associated with Alzheimer's disease. Neither plaques nor NFT are a cause of neurodegeneration, but markers of damage and progression of AD. Nevertheless, both proteins play a central role in the development of AD and hence serve as biomarkers measured in cerebrospinal fluid [47]. It is not absolutely clear yet which of them is the real culprit responsible for eventual neuronal death. A number of observations point at tau, for example, neurofibrillary degeneration, and not β -amyloidosis, correlates with the presence of dementia in humans [48-50]

Neurofibrillary degeneration due to aberrant phosphorylation of tau could be prevented by inhibiting the involved enzymes, which makes GSK-3 β , cdk5, PKA and other kinases attractive targets in developing AD cures [1,4,46]. Dephosphorylation could be promoted by upregulating PP2A, a phosphatase with broad substrate specificity.

Lithium inhibits GSK-3 β , as it competes with magnesium [51,52]. In clinical studies, lithium was administered alone or in combination with valproate [53]. Further GSK-3 β -inhibiting compounds as aloisines, flavopiridol, hymenialdisine, paullones, and staurosporine are under evaluation. The small molecule GSK-3 β inhibitor tideglusib has reached clinical phase II for mild-to-moderate AD [54]. Aloisines and flavopiridol also inhibit cdk5, as does the purine olomucin. A reduction of tau hyperphosphorylation by administration of another purine, the selective cdk5 inhibitor roscovitine, could be achieved in mice and rats [55,56]. PP2A activity can be increased by down-

regulating the two endogenous inhibitor proteins I $_1^{PP2A}$ and I $_2^{PP2A}$ [6,57]. The NMDA antagonist memantine, a well-established drug for the management of moderate to severe AD, reverses tau hyperphosphorylation by regenerating PP2A [58]. The anti-oxidant melatonin has also been shown to restore the activity of the inhibited enzyme [59,60].

Davunetide (AL-108), an octapeptide corresponding to murine activity-dependent neuroprotective protein (74-81), binds to tubulin and promotes microtubule assembly [61]. Formulations for intranasal application and injection have been evaluated in clinical studies. Clinical tests were also performed with methylene blue (methylthioninium chloride) [62]. The dye prevents tau assembly and disrupts existing aggregates, though the mode of action is not known yet [63].

Results obtained from immunotherapeutic studies using AD models are encouraging [64]. Immunizations with A β or tau fragments showed positive effects such as improvement of locomotor activity and ability to perform cognitive tasks. Active immunization with phosphorylated tau fragments as (pSer^{396,404})-Tau (379-408) [65], (pSer²⁰²,pThr²⁰⁵)-Tau (195-231), (pThr²¹², pSer²¹⁴)-Tau (207-220), or (pThr²³¹)-Tau (224-238) [66] decreased tau pathology.

Conclusion

Numerous promising therapeutic approaches tackling the neuropathological effects of either aberrant tau modification or β -amyloid aggregate formation are being followed currently. This gives rise to hope that an effective cure for AD will be developed in the foreseeable future.

REFERENCES

- [1] **M. Morris et al.**
The many faces of tau.
Neuron 70, 410-426 (2011) Review
- [2] **E.M. Mandelkow et al.**
Tau domains, phosphorylation, and interactions with microtubules.
Neurobiol. Aging 16, 355-363 (1995)
- [3] **F. Liu et al.**
Dephosphorylation of tau by protein phosphatase 5: impairment in Alzheimer's disease.
J. Biol. Chem. 280, 1790-1796 (2005)
- [4] **C.-X. Gong and K. Iqbal**
Hyperphosphorylation of microtubule-associated protein tau: a promising therapeutic target for Alzheimer disease.
Curr. Med. Chem. 15, 2321-2328 (2008) Review
- [5] **W. Qian et al.**
PP2A regulates tau phosphorylation directly and also indirectly via activating GSK-3 β .
J. Alzheimers Dis. 19, 1221-1229 (2010)
- [6] **K. Iqbal et al.**
Alzheimer's disease neurofibrillary degeneration: pivotal and multifactorial.
Biochem. Soc. Trans. 38, 962-966 (2010) Review
- [7] **K. Iqbal et al.**
Tau in Alzheimer disease and related tauopathies.
Curr. Alzheimer Res. 7, 656-664 (2010) Review
- [8] **M. Kolarova et al.**
Structure and pathology of tau protein in Alzheimer disease.
Int. J. Alzheimers Dis. 2012, 731526 (2012) Review
- [9] **E.M. Mandelkow and E. Mandelkow**
Biochemistry and cell biology of tau protein in neurofibrillary degeneration.
Cold Spring Harb. Perspect. Med. 2, a006247 (2012) Review
- [10] **E. Köpke et al.**
Microtubule-associated protein tau. Abnormal phosphorylation of a non-paired helical filament pool in Alzheimer disease.
J. Biol. Chem. 268, 24374-24384 (1993)
- [11] **S. Jeganathan et al.**
The natively unfolded character of Tau and its aggregation to Alzheimer-like paired helical filaments.
Biochemistry 47, 10526-10539 (2008)
- [12] **D.W. Cleveland et al.**
Physical and chemical properties of purified tau factor and the role of tau in microtubule assembly.
J. Mol. Biol. 116, 227-247 (1977)
- [13] **N. Sergeant et al.**
Biochemistry of Tau in Alzheimer's disease and related neurological disorders.
Expert Rev. Proteomics 5, 207-224 (2008)
- [14] **H. Yoshida and M.J. Goedert**
Phosphorylation of microtubule-associated protein tau by AMPK-related kinases.
J. Neurochem. 120, 165-176 (2012)
- [15] **N. Sergeant et al.**
Tau protein as a differential biomarker of tauopathies.
Biochim. Biophys. Acta 1739, 179-197 (2005)
- [16] **R. Brandt and G. Lee**
Functional organization of microtubule-associated protein tau. Identification of regions which affect microtubule growth, nucleation, and bundle formation in vitro.
J. Biol. Chem. 268, 3414-3419 (1993)
- [17] **R. Brandt et al.**
Interaction of tau with the neural plasma membrane mediated by tau's amino-terminal projection domain.
J. Cell Biol. 131, 1327-1340 (1995)
- [18] **A.D.C. Alonso et al.**
Role of abnormally phosphorylated tau in the breakdown of microtubules in Alzheimer disease.
Proc. Natl. Acad. Sci. USA 91, 5562-5566 (1994)
- [20] **A. Sengupta et al.**
Phosphorylation of tau at both Thr 231 and Ser 262 is required for maximal inhibition of its binding to microtubules.
Arch. Biochem. Biophys. 357, 299-309 (1998)
- [20] **A.C. Alonso et al.**
Promotion of hyperphosphorylation by frontotemporal dementia tau mutations.
J. Biol. Chem. 279, 34873-34881 (2004)
- [21] **A.C. Alonso et al.**
Alzheimer's disease hyperphosphorylated tau sequesters normal tau into tangles of filaments and disassembles microtubules.
Nat. Med. 2, 783-787 (1996)
- [22] **S.W. Min et al.**
Acetylation of tau inhibits its degradation and contributes to tauopathy.
Neuron 67, 953-966 (2010)
- [23] **T.J. Cohen et al.**
The acetylation of tau inhibits its function and promotes pathological tau aggregation.
Nat. Commun. 2, 252-258 (2011)
- [24] **B.L. Goode and S.C. Feinstein**
Identification of a novel microtubule binding and assembly domain in the developmentally regulated inter-repeat region of tau.
J. Cell Biol. 124, 769-781 (1994)
- [25] **L. Gan and L. Mucke**
Paths of convergence: sirtuins in aging and neurodegeneration.
Neuron 58, 10-14 (2008)

- [26] **C. Julien et al.**
Sirtuin 1 reduction parallels the accumulation of tau in alzheimer disease.
J. Neuropathol. Exp. Neurol. 68, 48-58 (2009)
- [27] **T.C. Gamblin et al.**
Caspase cleavage of tau: linking amyloid and neurofibrillary tangles in Alzheimer's disease.
Proc. Natl. Acad. Sci. USA 100, 10032-10037 (2003)
- [28] **A.L. Guillozet-Bongaarts et al.**
Tau truncation during neurofibrillary tangle evolution in Alzheimer's disease.
Neurobiol. Aging 26, 1015-1022 (2005)
- [29] **A.S. Chesser et al.**
Tau clearance mechanisms and their possible role in the pathogenesis of Alzheimer disease.
Front. Neurol. 4, 22 (2013)
- [30] **M.J. Lee et al.**
Tau degradation: the ubiquitin-proteasome system versus the autophagy-lysosome system.
Prog. Neurobiol. 105, 49-59 (2013)
- [31] **B. Kuhla et al.**
Effect of pseudophosphorylation and cross-linking by lipid peroxidation and advanced glycation end product precursors on tau aggregation and filament formation.
J. Biol. Chem. 282, 6984-6991 (2007)
- [32] **A. Watanabe et al.**
Deamidation and isoaspartate formation in smeared tau in paired helical filaments: unusual properties of the microtubule-binding domain of tau.
J. Biol. Chem. 274, 7368-7378 (1999)
- [33] **M.R. Reynolds et al.**
Site-specific nitration and oxidative dityrosine bridging of the tau protein by peroxynitrite: implications for Alzheimer's disease.
Biochemistry 44, 1690-1700 (2005)
- [34] **M.R. Reynolds et al.**
Nitration in neurodegeneration: deciphering the "Hows" "nYs."
Biochemistry 46, 7325-7336 (2007)
- [35] **L.A. Robertson et al.**
The potential role of tau protein O-glycosylation in Alzheimer's disease.
J. Alzheimers Dis. 6, 489-495 (2004)
- [36] **S.A. Yuzwa et al.**
Increasing O-GlcNAc slows neurodegeneration and stabilizes tau against aggregation
Nat. Chem. Biol. 8, 393-399 (2012)
- [37] **N. Sato and R. Morishita**
The roles of lipid and glucose metabolism in modulation of β -amyloid, tau, and neurodegeneration in the pathogenesis of Alzheimer disease.
Front. Aging Neurosci. 7, 199 (2015)
Review
- [38] **C. Smet et al.**
The peptidyl prolyl cis/trans-isomerase Pin1 recognizes the phospho-Thr212-Pro213 site on Tau.
Biochemistry 43, 2032-2040 (2004)
- [39] **M. Balastik et al.**
Pin1 in Alzheimer's disease: multiple substrates, one regulatory mechanism?
Biochim. Biophys. Acta 1772, 422-429 (2007)
- [40] **K. Nakamura et al.**
Proline isomer-specific antibodies reveal the early pathogenic tau conformation in Alzheimer's disease.
Cell 149, 232-244 (2012)
- [41] **A. Kondo et al.**
Antibody against early driver of neurodegeneration cis P-tau blocks brain injury and tauopathy.
Nature 523, 431-436 (2015)
- [42] **M. von Bergen et al.**
Assembly of tau protein into Alzheimer paired helical filaments depends on a local sequence motif (306VQI-VYK311) forming β structure.
Proc. Natl. Acad. Sci. USA 97, 5129-5134 (2000)
- [43] **M.M. Mocanu et al.**
The potential for beta-structure in the repeat domain of tau protein determines aggregation, synaptic decay, neuronal loss, and coassembly with endogenous Tau in inducible mouse models of tauopathy.
J. Neurosci. 28, 737-748 (2008)
- [44] **C. Schirmer et al.**
Hsp90 directly interacts, in vitro, with amyloid structures and modulates their assembly and disassembly.
Biochim. Biophys. Acta 1860, 2598-2609 (2016)
- [45] **A. Salminen et al.**
Hsp90 regulates tau pathology through co-chaperone complexes in Alzheimer's disease.
Prog. Neurobiol. 93, 99-110 (2011)
- [46] **T. Do et al.**
Interactions between amyloid- β and Tau fragments promote aberrant aggregates: implications for amyloid toxicity.
J. Phys. Chem. B 118, 11220-11230 (2014)
- [47] **J.-H. Kang et al.**
Clinical utility and analytical challenges in measurement of cerebrospinal fluid amyloid- β (1-42) and τ proteins as Alzheimer disease biomarkers.
Clin. Chem. 59, 903-916 (2013)
Review
- [48] **E. Giacobini and G. Gold**
Alzheimer disease therapy - moving from amyloid- β to tau.
Nat. Rev. Neurol. 9, 677-686 (2013)
Review
- [49] **G.S. Bloom**
Amyloid- β and tau: the trigger and bullet in Alzheimer disease pathogenesis.
JAMA Neurol. 71, 505-508 (2014)

[50] **A. Boutajangout and T. Wisniewski**

Tau-based therapeutic approaches for Alzheimer's disease - a mini-review,
Gerontology 60, 381-385 (2014).
Review

[51] **W. Noble et al.**

Inhibition of glycogen synthase kinase-3 by lithium correlates with reduced tauopathy and degeneration in vivo.
Proc. Natl. Acad. Sci. USA 102, 6990-6995 (2005)

[52] **P.N. Tariot and P.S. Aisen**

Can lithium or valproate untie tangles in Alzheimer's disease?
J. Clin. Psychiatry 70, 919-921 (2009)

[53] **H. Hampel et al.**

Lithium trial in Alzheimer's disease: A randomized, single-blind, placebo-controlled, multicenter 10-week study.
J. Clin. Psychiatry 70, 922-931 (2009)

[54] **S. Lovestone et al.**

A phase II trial of tideglusib in Alzheimer's disease.
J. Alzheimers Dis. 45, 75-88 (2015)

[55] **M. Kitazawa et al.**

Lipopolysaccharide-induced inflammation exacerbates tau pathology by a cyclin-dependent kinase 5-mediated pathway in a transgenic model of Alzheimer's disease.
J. Neurosci. 25, 8843-8853 (2005)

[56] **Y. Wen et al.**

Cdk5 is involved in NFT-like tauopathy induced by transient cerebral ischemia in female rats.
Biochim. Biophys. Acta 1772, 473-483 (2007)

[57] **I. Tsujiro et al.**

Inhibitors of protein phosphatase-2A from human brain structures, immunocytochemical localization and activities towards dephosphorylation of the Alzheimer type hyperphosphorylated tau.
FEBS Lett. 579, 363-372 (2005)

[58] **L. Li et al.**

Memantine inhibits and reverses the Alzheimer type abnormal hyperphosphorylation of tau and associated neurodegeneration.
FEBS Lett. 566, 261-269 (2004)

[59] **X.-C. Li, et al.**

Effect of melatonin on calyculin A-induced tau hyperphosphorylation.
Eur. J. Pharmacol. 510, 25-30 (2005)

[60] **L.Q. Zhu et al.**

Effect of inhibiting melatonin biosynthesis on spatial memory retention and tau phosphorylation in rat.
J. Pineal. Res. 37, 71-77 (2004)

[61] **I. Gozes et al.**

Addressing Alzheimer's disease tangles: From NAP to AL-108.
Curr. Alzheimer Res. 6, 455-460 (2009)

[62] **T. Gura**

Hope in Alzheimer's fight emerges from unexpected places.
Nat. Med. 14, 894 (2008)

[63] **C.M. Wischik et al.**

Selective inhibition of Alzheimer disease-like tau aggregation by phenothiazines.
Proc. Natl. Acad. Sci. USA 93, 11213-11218 (1996).

[64] **F. Panza et al.**

Immunotherapy for Alzheimer's disease: from anti- β -amyloid to tau-based immunization strategies.
Immunotherapy 4, 213-238 (2012)
Review

[65] **A.A. Asuni et al.**

Immunotherapy targeting pathological tau conformers in a tangle mouse model reduces brain pathology with associated functional improvements.
J. Neurosci. 27, 9115-9129 (2007)

[66] **M. Boimel et al.**

Efficacy and safety of immunization with phosphorylated tau against neurofibrillary tangles in mice.
Exp. Neurol. 224, 472-485 (2010)

TAU PEPTIDES FOR ALZHEIMER'S RESEARCH

Bachem's offer for Alzheimer's research comprises a broad choice of tau protein fragments and amyloid peptides. Please see also our Product Monograph "Amyloid Peptides".

For more details on our Alzheimer's disease peptides, please go to:
shop.bachem.com

TAU PEPTIDES

Microtubule-Associated Protein (142-161) (human)

(Tau Peptide (422-441))

H-8062 NEW

SPQLATLADEVASLAKQGL

Tau Peptide (1-16)

H-8004 NEW

MAEPRQEFVEMDMAG

Tau Peptide (45-73)

(Exon 2/Insert 1 Domain)

H-7804 NEW

ESPLQTPTEDGSEEPGSETSDAKSTPTAE

Tau Peptide (74-102)

(Exon 3/Insert 2 Domain)

H-7806 NEW

DVTAPLVDEGAPGKQAAAQPHTEIPEGTT

(Ser(PO₃H₂)²⁰²,Thr(PO₃H₂)²⁰⁵)- Tau Peptide (194-213)

H-8166 NEW

RSGYSSPG(p)SPG(p)TPGSRSRTP

(Thr(PO₃H₂)²³¹)-Tau Peptide (225-237)

H-8048 NEW

KVAVVR(p)TPPKSPS

Tau Peptide (244-274)

(Repeat 1 Domain)

H-7982 NEW

QTAPVPMPLKKNVSKIGSTENLKHQP-
GGGK

Acetyl-Tau Peptide (244-274)

(Repeat 1 Domain)

H-7808 NEW

Ac-QTAPVPMPLKKNVSKIG-
STENLKHQPGGGK

Tau Peptide (245-274)

(Repeat 1 Domain)

H-7978 NEW

TAPVPMPLKKNVSKIGSTENLKHQP-
GGGK

Tau Peptide (255-314)

(Repeat 2 Domain)

H-8038 NEW

NVSKIGSTENLKHQPGGGKVQIINK-
KLDLSNVQSKCGSKDNIKHVPGGGSVQI-
VYKPVD

(Ser(PO₃H₂)²⁶²)-Tau Peptide (260-264)

PAb Blocking

H-7966 NEW

IG(p)STE

Tau Peptide (268-282)

H-8068 NEW

HQPGGGKVQIINKKL

Tau Peptide (273-284)

H-8102 NEW

GKVQIINKKLDL

Acetyl-Tau Peptide (273-284) amide

H-8168 NEW

Ac-GKVQIINKKLDL-NH₂

Tau Peptide (274-288)

H-8072 NEW

KVQIINKKLDLSNVQ

Tau Peptide (275-305)

(Repeat 2 Domain)

H-7812 NEW

VQIINKKLDLSNVQSKCGSKDNIKHVP-
GGGS

Tau Peptide (277-291)

H-8074 NEW

IINKKLDLSNVQSKC

Tau Peptide (295-309)

H-6076 NEW

DNIKHVPGGGSVQIV

Tau Peptide (298-312)

H-8078 NEW

KHVPGGGSVQIVYKP

Tau Peptide (301-315)

H-8082 NEW

PGGGSVQIVYKPVDL

Tau Peptide (304-318)

H-8084 NEW

GSVQIVYKPVDSLKV

Tau Peptide (306-317)

H-8096 NEW

VQIVYKPVDSLK

TAU PEPTIDES (CONTINUED)

Tau Peptide (306-336) (Repeat 3 Domain)

H-7814 NEW

VQIVYKPVDSLKVTSKCGSLGNIHHKP-
GGGQ

Biotinyl-Tau Peptide (306-336) (Repeat 3 Domain)

H-8028 NEW

Biotinyl-VQIVYKPVDSLKVTSKCGSLGNI-
HHKPGGGQ

Tau Peptide (307-321)

H-8086 NEW

QIVYKPVDSLKVTSK

Tau Peptide (323-335)

H-7818 NEW

GDTSPRHLSNVKK

Tau Peptide (337-368) (Repeat 4 Domain)

H-7816 NEW

VEVKSEKLDKDRVQSKIGSLDNITHVP-
GGGN

Tau Peptide (379-408)

H-8172 NEW

RENAKAKTDHGAEIVYKSPVVS-
GDTSPRHL

(Ser(PO₃H₂)^{396,404}) Tau Peptide (379-408)

H-8164 NEW

RENAKAKTDHGAEIVYK(p)SPVVS
GDT(p)SPRH

Lys-Trp-Lys-(Ser(GlcNAc-β-D)⁴⁰⁰-

Tau Peptide (388 - 411)-Lys-

Lys(biotinyl) amide

H-7822 NEW

KWKHGAEIVYKSSPVVS(GlcNAc-β-D)
GDTSPRHLSNVKK(biotinyl)-NH₂

Tau Peptide (472-487)-PEG6-(507-526) (human)

H-7988 NEW

RGAAPPGQKQGQANATR-amino-PEG6-
propionyl-KSGDRSGYSSPGSPGTPGSR

Tau Peptide (512-525) amide

H-7984 NEW

SGYSSPGSPGTPGS-NH₂

PHF6 AND RELATED PEPTIDES

PHF6

H-8098 NEW

VQIVYK

Ac-Tyr-Lys-NH₂

H-8124 NEW

Ac-YK-NH₂

Ac-Val-Tyr-Lys-NH₂

H-8108 NEW

Ac-VYK-NH₂

Acetyl-PHF4 amide

H-8106 NEW

Ac-IVYK-NH₂

Acetyl-PHF5 amide

H-8104 NEW

Ac-QIVYK-NH₂

Acetyl-PHF6 amide

H-8112 NEW

Ac-VQIVYK-NH₂

Acetyl-PHF6KE amide

H-8122 NEW

Ac-VQIVYE-NH₂

Acetyl-PHF6IV amide

H-8114 NEW

Ac-VQVVYK-NH₂

Acetyl-PHF6QV amide

H-6118 NEW

Ac-VVIVYK-NH₂

Acetyl-PHF6YA amide

H-8116 NEW

Ac-VQIVAK-NH₂

T-Peptide

(all-D-PHF6-R9)

H-8126 NEW

Ac-vqivykRRRRRRRRR-NH₂

TAU-RELATED PRODUCTS

Enzyme inhibitors and substrates and further peptides and biochemicals for Alzheimer's research are available on our online shop **shop.bachem.com**

- ↳ Areas of Interest
 - ↳ Alzheimer's Disease
 - ↳ Tau

PIN-1 SUBSTRATES

Ac-Ala-Ala-Ser(PO₃H₂)-Pro-Arg-pNA

L-2155

Ac-AA(p)SP-pNA

Suc-Ala-Glu-Pro-Phe-AMC

L-1750

Suc-AEPF-AMC

Suc-Ala-Glu-Pro-Phe-pNA

L-1635

Suc-AEPF-pNA

H-Trp-Phe-Tyr-Ser(PO₃H₂)-Pro-Arg-AMC

L-1930

WFY(p)SPR-AMC

H-Trp-Phe-Tyr-Ser(PO₃H₂)-Pro-Arg-pNA

L-2075

WFY(p)SPR-pNA

PKA INHIBITORS AND SUBSTRATES

cAMP-Dependent Protein Kinase Inhibitor-α (5-22) amide (human, mouse, rabbit, rat)

H-3222

TTYADFIASGRTGRRNAI-NH₂

H-Arg-Gly-Tyr-Ala-Leu-Gly-OH

M-1105

RGYALG

PKA Inhibitor (6-22) amide

N-2040

TYADFIASGRTGRRNA-NH₂

PKItide

H-3234

IAAGRTGRRQAIHDILVAA

H-Arg-Lys-Ile-Ser-Ala-Ser-Glu-Phe-Asp-Arg-Pro-Leu-Arg-OH (BPDEtide)

H-3216

RKISASEFDRPLR

Calcineurin Substrate

H-2084

DLDVPIPGRFDRRVSAAE

H-Gly-Arg-Gly-Leu-Ser-Leu-Ser-Arg-OH

H-7405

GRGLSLSR

H1-7

H-1805

RRKASGP

Kemptide trifluoroacetate salt

M-1510

LRRASLG trifluoroacetate salt

Kemptide acetate salt

M-2725

LRRASLG acetate salt

(Trp⁶)-Kemptide (Chocktide)

M-1525

LRRWSLG

(Val⁶,Ala⁷)-Kemptide

M-1515

LRRASVA

MELATONIN

Melatonin

Q-1300

N-Acetyl-2-benzyl-tryptamine (Luzindole)

Q-1885



PERI- VASCULAR CELL

Perivascular cell containing tau protein.

Fluorescence deconvolution light micrograph of a section through a perivascular cell, showing tau protein (red). Tau protein is an abundant neural protein, but aggregations of this protein are thought to play a role in brain disorders such as Alzheimer's disease. Magnification: x200, when printed 10 cm wide.

R.. BICK, B. POINDEXTER, UT
MEDICAL SCHOOL/SCIENCE
PHOTO LIBRARY

Marketing & Sales Contact

Europe, Africa, Middle East and Asia Pacific

Bachem AG

Tel. +41 58 595 2020

sales.ch@bachem.com

Americas

Bachem Americas, Inc.

Tel. +1 888 422 2436 (toll free in USA & Canada)

+1 310 539 4171

sales.us@bachem.com

Visit our website

www.bachem.com

or shop online

shop.bachem.com

All information is compiled to the best of our knowledge. We cannot be made liable for any possible errors or misprints. Some products may be restricted in certain countries.



www.bachem.com



shop.bachem.com